

# Welcome To



**Aegis**

*Provide The Best... Inspire The Rest*

Door & Door Hardware, Window Hardware, Fire Doors, Lift Interior, High Security Locks, Railings, Washroom Panel & Bathroom Accessories,  
Modular Glass Partition, Rolling Shutter, External Glass Façade, Roofing Shingles

The Aegis logo consists of the word "Aegis" in a bold, orange, sans-serif font, set against a dark blue rectangular background.

ISO 9001:2015

The letters "AMC" are displayed in a large, bold, black, sans-serif font, centered horizontally.The words "Annual Maintenance Contract" are written in a very large, bold, black, sans-serif font, spanning across the middle of the image.



# About Us



- Established in 2009, we are a team of young, dynamic and committed professionals.
- We provide solution for interior and Exterior applications in Commercial and Residential Spaces.
- Innovation, excellence and quality are the foundations of our company.
- We partner with International Brands.

- **GEZE**
- **Abloy**
- **Forms+Surfaces**
- **d Line**
- **LGF Sysmac**
- **Mantion**
- **CertainTeed by Saint-Gobain**
- **Q-Rail**





# Why Aegis...



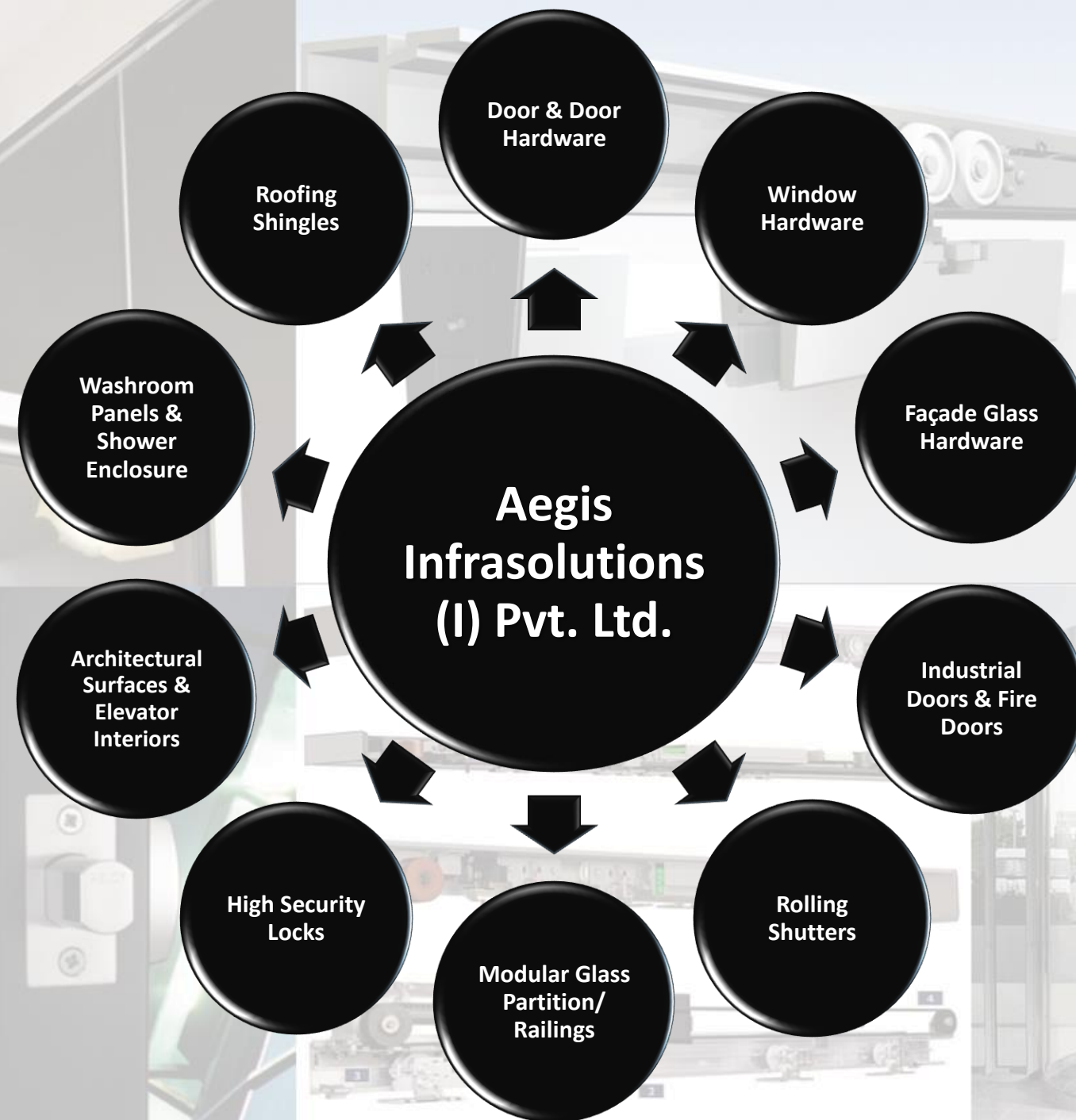
- Pan India presence.
- Impeccable pre and post sales services.
- Well qualified and trained team (Average Experience 12 years).
- Our strength is contacts, credibility & competence.
- Adept in integrated communications.
- Striving towards customer satisfaction by providing right and timely solutions.
- Constant increase in customer base year on year.
- Client retention 100% (No AMC Lost).
- Gradual and consistent increase in sales and service staff.





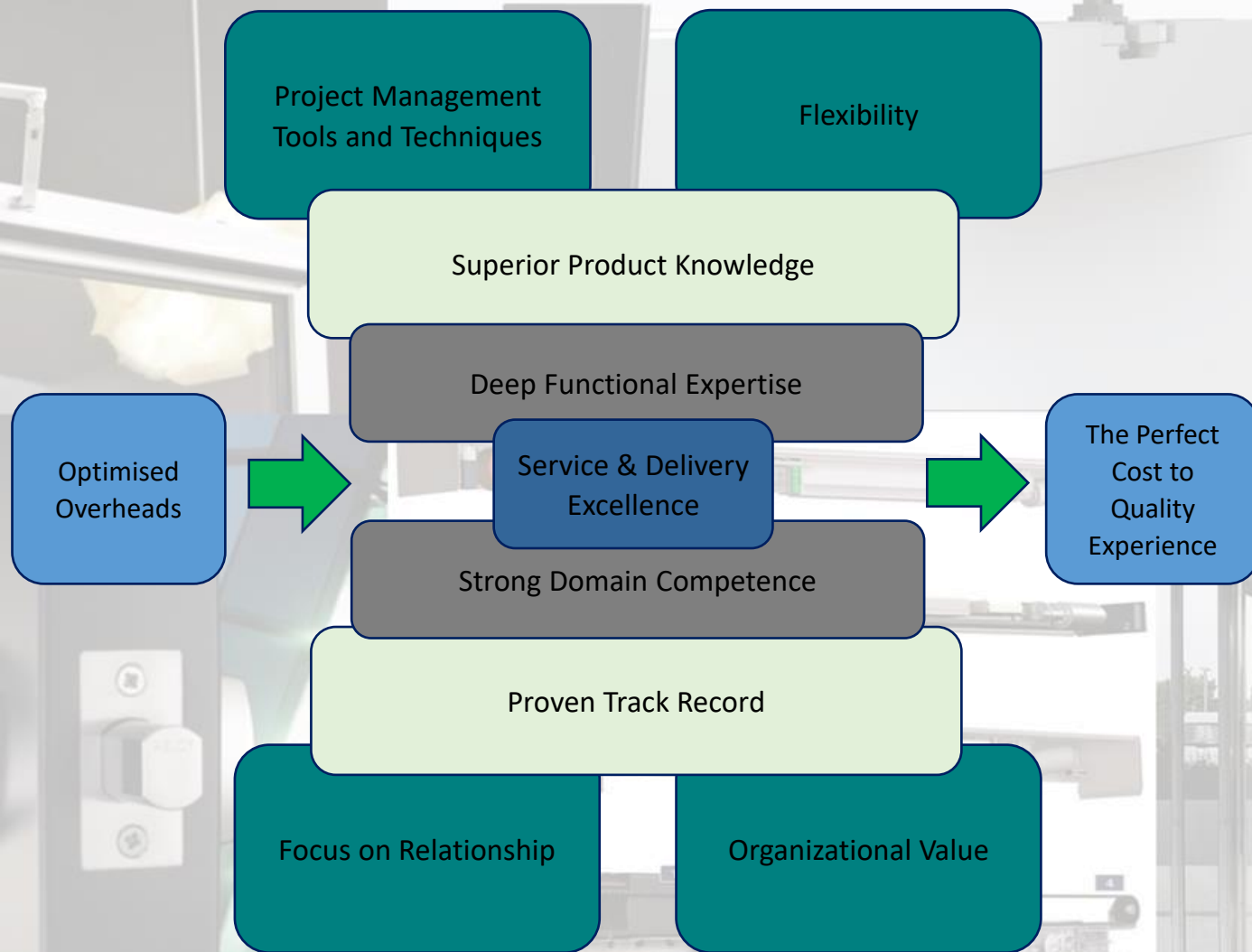
# Our...

- **Core Purpose:** We bring comfort at work & home.
- **Core Value:** Prompt & Precise.
- **Brand Promise:** Consistency in quality service.
- **Goal:** To Establish our self as a prominent service brand by 2025.





# Our value addition to Projects





# Instruments covered

- Automatic Sliding Doors.
- Swing Doors
- Door Hardware. Wooden / Metal / Glass / Fire Door
- Electrical and Electronics Locks.
- Rolling Shutters.
- Sliding Gates.
- Revolving Doors.
- Glass Partitions.
- Lift Interiors and Wall Claddings.







# Checklist (Automatic Sliding Doors)

- Track cleaning
- Roller Cleaning consisting of bearings and wheels
- Alignment of the roller and the track
- Routine inspection and general check of the operational reliability
- Check door system for smooth running
- Floor clearance measurement
- Anti-corrosion lubrication for bearing and tracks
- Functional check of Program switch, Power failure, and Emergency switch.
- Inspection of Floor Guides
- Functional inspection of Motion sensors and Safety sensors.
- Travel parameters are thoroughly checked ( Open/ Closed/Hold)





# Checklist (Door Hardware)

- **Floor Spring:-** Speed , Alignment , Door Holding Pivot , Dust Removing.
- **Door closer:-** Speed Adjustment , Body check Orientation and Mounting Screws.
- **Patch Fitting:-** Holding strength , Noisy issue ,alignment for the door.
- Handle Orientation.
- Lock functions.





# Checklist (Electrical Locks)

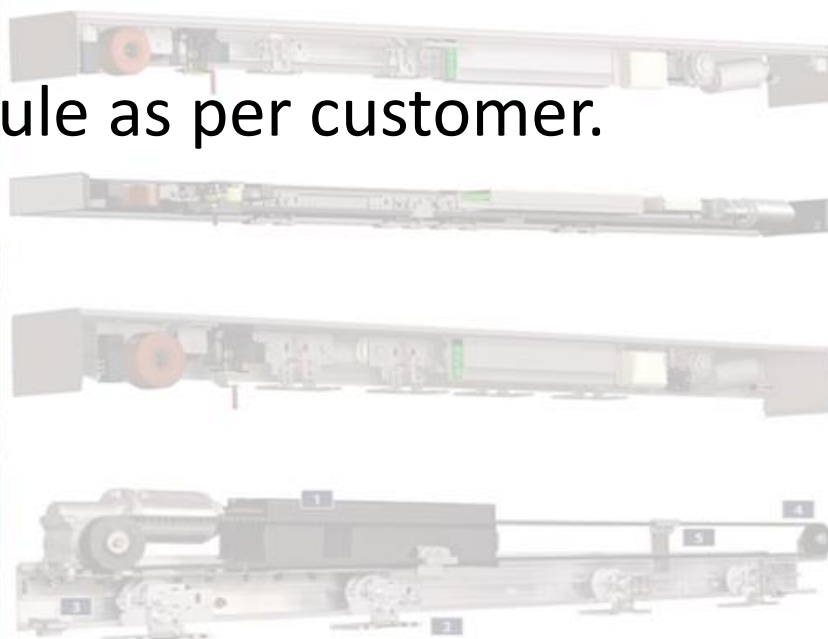
- Power supply.
- Connector Cable.
- Dead Bolt Operation ( Manual / Remote ).
- Latch Operation.
- Configuration as per application.





# AMC Schedule

- Monthly Health Check-ups for Instruments.
- Quarterly Service for the Instruments.
- Quick Response to Break Down Calls.
- Customized AMC Schedule as per customer.







# Our AMC Clients

- The Taj Hotels
- Jindal Steel and Software
- Hindustan Unilever Limited
- Phoenix Marketcity (Mumbai, Pune)
- R Mall
- Pidilite
- Reliance Antila
- Intercontinental Hotel
- Bharat Diamond Market
- India Bulls Financial Centre
- Marathon Reality
- Bank Of America
- Siemens
- National Payments Corporation of India
- Inizo
- Yes Bank
- Eprico
- First International Finance Centre
- Hotel Sun N Sand
- Wockhardt Hospital
- Sony TV
- Citi Bank
- One BKC
- Apollo Hospital





# Our AMC Clients



- Allianz Technology SE
- Century Textile and Industries Ltd
- IndiaBulls
- IPCA Laboratories Ltd
- Lodha Altamount
- Sanofi
- UPL
- W Goa
- DSP Merrill Lynch
- Halliburton
- Prime Focus
- ICICI Prudential

- Delhi Metro Rail
- Bayer Chemicals
- Mackay
- Paragon Plaza
- Reliable Plaza
- Deegesoft
- Plam Groves Beach Hotels
- Horiba India
- ThyssenKrupp
- Galaxy Surfactants
- Sessaasai
- And Many More Trusted Companies .....





# Service Level Agreement

- First Inspection :- Less than 4 Working hours of complaint Register.
  - Minor Issue :- Less than 4 hours after First Visit.
  - Major Issue :- 72 working Hours.
- ★ Subject to parts availability.





# Point of Contact

- Customer Support
- Dedicated Service Engineers
- For AMC

[customercare@aegisinfra.com](mailto:customercare@aegisinfra.com)

[service@aegisinfra.in](mailto:service@aegisinfra.in)

[amc@aegisinfra.in](mailto:amc@aegisinfra.in)

Office No :- **022-2781 2550**







# We are working with



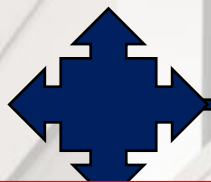
**Architects**- Edifice, Concept, Jami Jambusarwala & Associates, Bobby Mukherji & Associates, Hafeez Contractors, M.Mozer, Talathi Pantaki and Associates, Space Matrix, DSP Design, DWP Interics, Megas Architecture Pvt. Ltd, Garnet Interior, CRN. etc...

**Builders**- Lokhandwala, Raheja, Lodha, Oberoi Realty, India Bulls, Akshar Developers, Omkar, Dhiraj Reality, DB Reality, Soham Developers, Balaji Developers. etc...

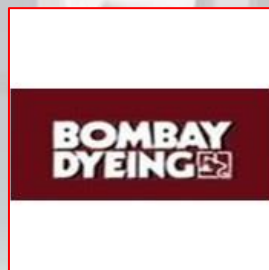
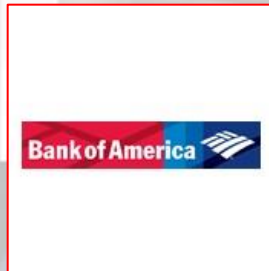
**Contractors**- Unity, SPCL, Eleganz Interior, SPCMG, Bhawar, ANJ, Narsi, Damain, Kaishar Interior, Padam Interior, Interscape, Swati Interior. etc...

**Project Management Consultants**- CBRE, JLL, Equinox, Cushman Wakefield. etc...

Industrial Doors and Infrastructure in Projects for Reliance, Aditya Birla Group, Commercial Complexes, High end residential projects, Pharmaceutical Companies, Laboratories, Warehouses. etc...



# Our Clients





**Aegis**

ISO 9001:2015



**Aegis**

ISO 9001:2015

To know more please visit [www.aegisinfra.in](http://www.aegisinfra.in) Mail id: [salesupport@aegisinfra.in](mailto:salesupport@aegisinfra.in)

**Branch offices:** Nehru place, New Delhi : **+91 11 2646 1111**

**Head Office:**

Shop -4, Shah Complex - IV, Sector - 14, Palm beach Road, Sanpada, Navi Mumbai- 400

705

**Ph.No: +91 22 2781 2550**





**Thank You  
For your courtesy!**